



# International Journal of Innovative Research in Science Engineering and Technology (IJIRSET)

*(A Monthly, Peer Reviewed, Refereed, Scholarly Indexed, Open Access Journal)*



**Impact Factor: 8.699**

**Volume 14, Issue 5, May 2025**

# Smart Vehicle Tracking and Location Monitoring System for Efficient Fleet Management

C Ganesh, Suganthi C

Assistant Professor, Department of Computer Application , Vivekanandha Institute of Information and Management Studies, Tiruchengode, Tamil Nadu, India

Master of Computer Applications, Vivekanandha Institute of Information and Management Studies, Tiruchengode, Tamil Nadu, India

**ABSTRACT:** The Smart Vehicle Tracking and Location Monitoring System is a modern solution designed to improve fleet management through real-time GPS tracking and intelligent route optimization. It addresses challenges such as inefficient routing, lack of visibility, and high operational costs. The system enables tracking of vehicle locations, trip management, and driver behavior analysis. Key components include device profiles, location data, and route management. Developed using Angular, ASP.NET, and SQL, it ensures security and scalability. The system enhances fuel efficiency, driver safety, and service delivery. It empowers fleet-based businesses with data-driven insights for better decision-making.

**KEYWORDS:** Smart Vehicle Tracking, Fleet Management, Real-Time Location Monitoring, GPS-based Tracking System, Route Optimization, Intelligent Transportation System (ITS), Trip and Route Management, Driver Behavior Monitoring.

## I. INTRODUCTION

The Smart Vehicle Tracking and Location Monitoring System for Efficient Fleet Management is an advanced solution aimed at improving fleet operations through real-time tracking and intelligent route management. Fleet-based businesses often face challenges such as inefficient routing, lack of real-time visibility, and high operational costs. This system leverages GPS technology to monitor vehicle locations and movements continuously. It allows fleet managers to track vehicles, optimize routes, and monitor driver behavior effectively. Trip management features enable better scheduling and planning of vehicle usage. The system is built using Angular for the frontend, ASP.NET for the backend, and SQL Server for database management. It ensures secure data handling, real-time updates, and scalable performance. By analyzing location and route data, the system supports fuel efficiency and reduces downtime. Driver safety is also improved through behavior monitoring and route analysis. Overall, the system empowers businesses with actionable insights to enhance fleet performance and reduce operational costs.

## II. OBJECTIVES

The Smart Vehicle Tracking and Location Monitoring System is designed to enhance fleet management by combining real-time GPS tracking, intelligent route planning, and advanced data analytics. It allows fleet managers to view vehicle locations on an interactive map, manage routes and subroutes efficiently, and monitor trip details such as duration, driver activity, and stop points. The system analyzes driver behavior, including speeding and harsh braking, to promote safer driving practices.

Developed using Angular for the frontend, ASP.NET for the backend, and SQL Server for data storage, it offers a responsive, secure, and scalable solution. Role-based access ensures personalized user control, while the centralized dashboard simplifies the management of vehicles, trips, routes, and users. Configurable alerts and notifications keep administrators informed in real time. Insightful reports aid in data-driven decision-making, and the user-friendly interface ensures ease of use across all roles. This system significantly improves operational efficiency, reduces fuel consumption, and increases fleet safety and accountability.



### III. LITERATURE SURVEY

The demand for efficient fleet management solutions has significantly increased, driven by the need to optimize resource utilization, reduce operational costs, and enhance safety. Numerous studies have explored the integration of real-time tracking, intelligent routing, and telematics to address these challenges in fleet-based operations. Real-time GPS tracking is a cornerstone of modern fleet management systems. Sharma et al. (2020) emphasize that GPS-based vehicle tracking enhances operational visibility and enables timely decision-making by providing accurate location updates. These systems significantly reduce response times and help manage route deviations more effectively. Route optimization plays a critical role in improving fleet efficiency. Patil and Kulkarni (2019) investigated dynamic routing algorithms that respond to live traffic conditions, demonstrating notable reductions in fuel consumption and travel time. Their findings underline the value of intelligent route planning in logistics and transportation systems. Driver behavior monitoring is another crucial component that has gained attention in recent literature. According to Singh and Gupta (2021), monitoring behaviors such as excessive acceleration, harsh braking, and over-speeding can lead to improvements in driver safety and vehicle maintenance. The data collected is often used to provide performance feedback and enforce accountability. The role of modern web and cloud technologies in building scalable fleet tracking systems is highlighted in the work of Karthikeyan et al. (2018). They present an IoT-enabled framework that supports real-time data collection and centralized management via cloud infrastructure. Such systems ensure seamless communication between vehicles and control centers, thereby improving coordination. Furthermore, the use of development frameworks such as Angular for front-end interfaces and ASP.NET for back-end services is widely adopted in enterprise applications due to their robustness, security features, and compatibility with relational databases like SQL Server (Ahmed et al., 2022). These technologies facilitate responsive, secure, and scalable applications suitable for real-time fleet monitoring. Security and access control mechanisms are vital for protecting sensitive data within fleet management systems. Role-based access control (RBAC) is frequently recommended in literature to manage user permissions effectively, minimizing data breaches and maintaining system integrity. Lastly, analytics and reporting tools have been acknowledged as valuable assets for fleet optimization. Verma and Jain (2021) discuss the importance of visual dashboards and performance reports that transform raw vehicle data into actionable insights. These tools support data-driven decision-making in areas such as route planning, driver evaluation, and maintenance scheduling. The literature collectively supports the development of an integrated, technology-driven fleet management solution. By combining GPS tracking, intelligent routing, driver behavior analysis, secure architecture, and data analytics, the proposed system aligns with current research trends and addresses critical challenges in the domain of smart transportation systems.

### IV. EXISTING SYSTEM

Traditional fleet management systems rely on manual updates or basic GPS trackers with limited real-time functionality. These systems lack integration between vehicle tracking, route planning, and trip management, often leading to delays, miscommunication, and inefficiencies. Driver behavior and trip performance are rarely monitored, and analytical reporting is minimal. Many existing solutions are fragmented, not web-based, and lack scalability, making them unsuitable for managing large fleets effectively.

#### DISADVANTAGES

- Manual Route Planning – Time-consuming and error-prone.
- Limited Notifications – No smart alerts for vehicle or driver issues.
- Poor User Interface – Outdated and not mobile-friendly.
- Limited Data Visualization – Lacks real-time and graphical insights.
- Scalability Issues – Not designed for large-scale fleet operations.

### V. PROPOSED SYSTEM

The Smart Vehicle Tracking and Location Monitoring System offers a web-based solution with real-time GPS tracking displayed on an interactive map. It supports route and subroute creation, automated trip scheduling, and detailed trip tracking through a user-friendly Angular frontend. The backend, built with ASP.NET and SQL Server, ensures secure login, role-based access, and comprehensive data storage. The system monitors driver behavior and route deviations, improving fleet efficiency and reducing costs.

**ADVANTAGES:**

- Real-time vehicle tracking with GPS updates
- Optimized route and subroute management
- Secure, role-based user access
- Detailed trip history and playback
- Responsive, mobile-friendly interface

**VI. METHODOLOGIES**

The development of the Smart Vehicle Tracking and Location Monitoring System follows a structured approach beginning with requirement analysis to identify key functionalities such as real-time GPS tracking, route optimization, and user access control. The system design phase involves creating the database schema, defining user roles, and planning the interactive frontend using Angular. The development phase includes building the frontend interface, backend APIs with ASP.NET, and implementing SQL Server for efficient data management. Integration with GPS devices ensures continuous real-time location updates. Rigorous testing, including unit, integration, and user acceptance tests, is performed to ensure system accuracy and reliability. Finally, the system is deployed on a secure platform with role-based access control and is maintained with regular updates based on user feedback and operational needs.

**MODULES**

- User Management Module
- Vehicle Management Module
- Device Profile Module
- Location Or RoutePoint Module
- Route & Subroute Management Module
- Trip Management Module

**MODULE DESCRIPTION****User Management Module**

Manages all user-related operations including secure registration, login, and authentication. It enforces role-based access control, ensuring Admins, Drivers, and Dispatchers can only access features relevant to their roles. User profiles include essential details such as usernames, emails, and encrypted passwords.

**Vehicle Management Module**

Facilitates adding, updating, and removing vehicles from the fleet, each linked to a GPS device for tracking. It tracks vehicle availability for assignments and generates alerts for scheduled maintenance, ensuring optimal fleet utilization and reduced downtime. Comprehensive vehicle data such as engine numbers, insurance details, fuel stats, and driver information are maintained.

**Device Profile Management Module**

Handles configuration, activation, and monitoring of GPS tracking devices installed on vehicles. It records device-specific data like SIM card numbers, activation dates, and signal strength. The system monitors device status in real-time to ensure uninterrupted connectivity and tracking reliability.

**Location/Route Point Management Module**

Captures and visualizes real-time GPS data on interactive maps, showing vehicle locations, speeds, and routes. It also supports geo-fencing features, enabling fleet managers to monitor vehicle movement within predefined areas, enhancing security and route compliance.

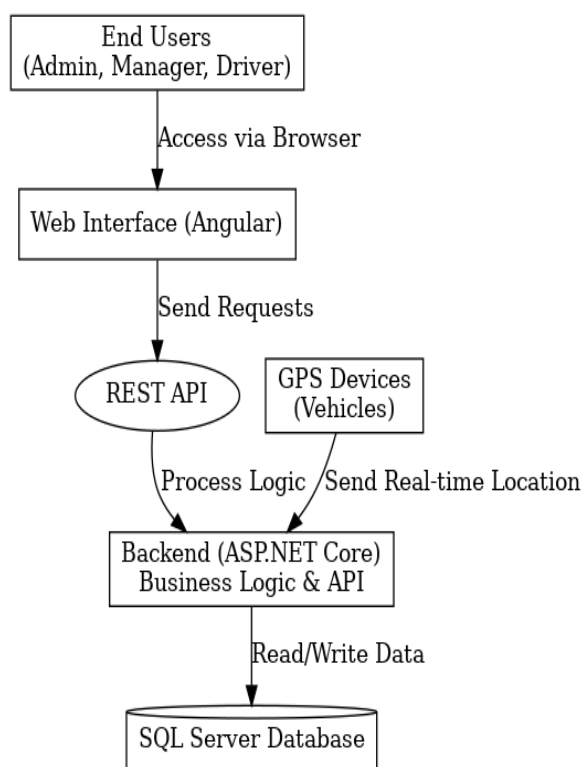
**Route & Subroute Management Module**

Allows fleet managers to define complex routes by breaking them into subroutes with detailed parameters such as distance, maximum travel time, and speed limits. This module supports efficient route planning and helps ensure that trips follow optimal paths to reduce travel time and fuel consumption.

### Trip Management Module

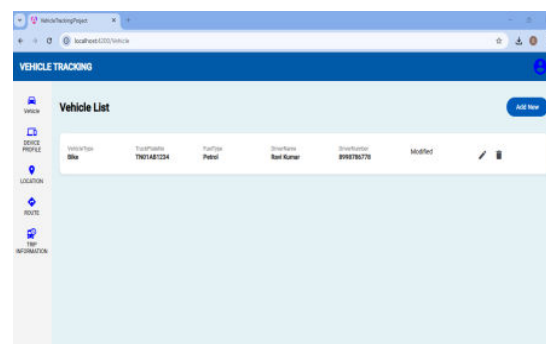
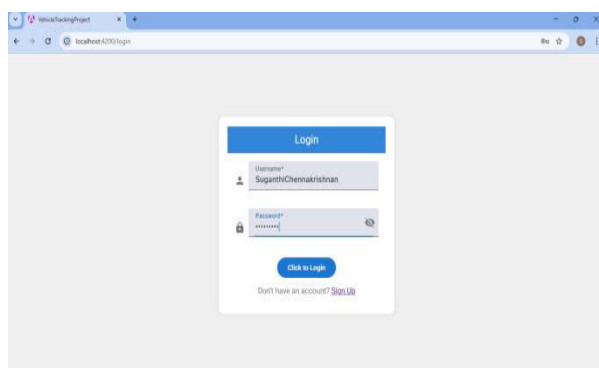
Enables scheduling, assigning, and monitoring of trips with detailed tracking of trip start/end times, assigned vehicles, drivers, and routes. It records trip-related information like consignee details, load remarks, and seal numbers, supporting operational transparency and accountability.

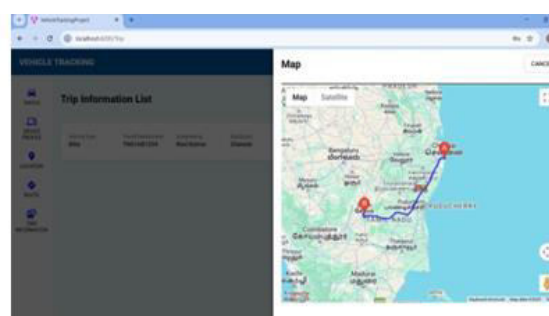
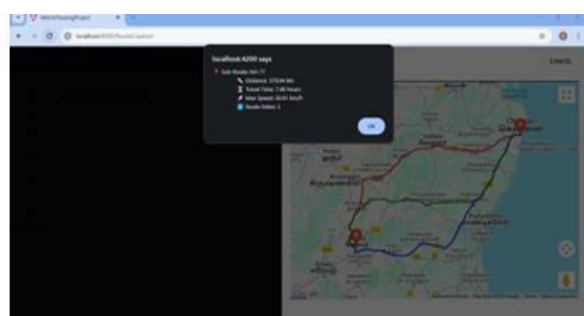
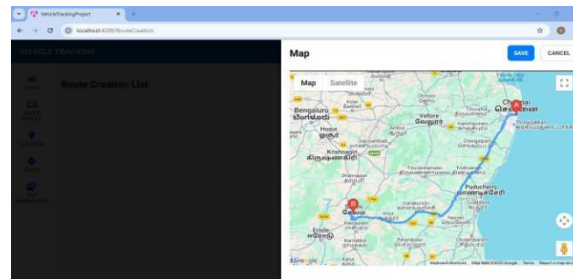
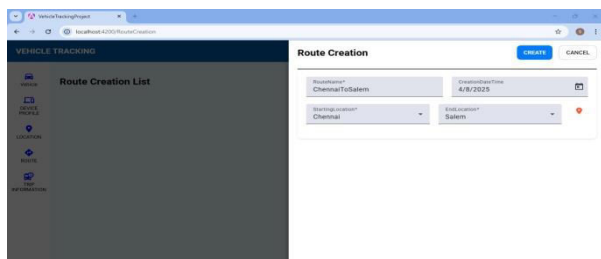
#### SYSTEM ARCHITECTURE:



### VII. EXPERIMENTAL RESULT

Figures shows the results (a) Login. (b) Vehicle List (c) Route Creation List (d) Route Creation (e) Sub Route Creation (f) Trip Information





## VIII. CONCLUSION

The Smart Vehicle Tracking and Location Monitoring System was successfully developed to provide real-time vehicle tracking, route management, and trip scheduling. Using Angular, ASP.NET, and SQL Server, the system offers a reliable platform for efficient fleet management. It enables administrators to monitor vehicles live, assign optimized trips, and maintain detailed records, while drivers can access and update their routes. Thorough testing ensured the system is robust, scalable, and user-friendly. Overall, the project improves fleet efficiency, reduces manual work, and provides a strong foundation for future enhancements like mobile apps and AI-driven features.

## IX. FUTURE ENHANCEMENT

The system can be enhanced with a dedicated mobile app for drivers and admins, AI-driven route optimization, geofencing alerts, and live traffic updates for dynamic rerouting. Adding driver behavior monitoring through sensors or OBD devices improves safety, while automated report generation and a comprehensive analytics dashboard support data-driven decisions. Multi-language support and cloud deployment will increase usability and scalability. Integration with IoT devices can provide real-time vehicle diagnostics, and predictive maintenance features can reduce downtime. Support for fleet telematics and fuel consumption tracking can further optimize operations. Lastly, incorporating push notifications and alert systems will keep users informed instantly.

## REFERENCES

1. Roger S. Pressman, Software Engineering: A Practitioner's Approach, 8th Edition, McGraw-Hill Education, 2014. Useful for understanding software development models, testing strategies, and implementation phases.
2. Andrew S. Tanenbaum, Computer Networks, 5th Edition, Pearson Education, 2010. Covers network communication essentials important for real-time tracking and data transmission.
3. Brett McLaughlin, Head First Object-Oriented Analysis and Design, O'Reilly Media, 2006. Provides insights into system design using object-oriented programming, applicable to ASP.NET development.
4. Paul Deitel & Harvey Deitel, C# for Programmers, 4th Edition, Pearson Education, 2010. A practical guide to C# programming, very helpful for backend development in ASP.NET.
5. Ramez Elmasri & Shamkant B. Navathe, Fundamentals of Database Systems, 7th Edition, Pearson, 2015. Covers database concepts and SQL Server-related design and optimization techniques.

**WEBSITE REFERENCES**

1. <https://www.verizonconnect.com/solutions/gps-fleet-tracking-software/>
2. <https://www.geotab.com/>
3. <https://www.samsara.com/products/telematics/gps-fleet-tracking>
4. <https://smartfleetusa.com/>
5. <https://www.azuga.com/>
6. <https://www.workyard.com/compare/gps-fleet-tracking-small-business>
7. <https://www.business.com/categories/best-gps-fleet-tracking-services/>
8. <https://www.softwareadvice.com.au/software/329274/vehicle-tracking-system>
9. <https://www.researchgate.net/publication/339678623> A Technical Paper Review on Vehicle Tracking System
10. <https://www.roambee.com/vehicle-tracking-systems-in-logistics-the-ultimate-guide/>





INTERNATIONAL  
STANDARD  
SERIAL  
NUMBER  
INDIA



# INTERNATIONAL JOURNAL OF INNOVATIVE RESEARCH

IN SCIENCE | ENGINEERING | TECHNOLOGY

 9940 572 462  6381 907 438  [ijirset@gmail.com](mailto:ijirset@gmail.com)



[www.ijirset.com](http://www.ijirset.com)

Scan to save the contact details